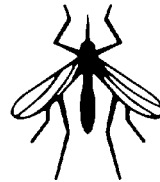


Altosid[®] Liquid Larvicide CONCENTRATE



PREVENTS EMERGENCE OF ADULT FLOODWATER MOSQUITOES

SPECIMEN LABEL

ACTIVE INGREDIENT:

(S)-Methoprene [Isopropyl (2E,4E,7S)-11-methoxy-3,7,11-trimethyl-2,4-dodecadienoate]	20.0%
OTHER INGREDIENTS:	80.0%
Total	100.0%

Formulation contains 1.72lb/gal (205.2 g/l) active ingredient.

EPA Reg No. 2724446

KEEP OUT OF REACH OF CHILDREN

CAUTION

SEE ADDITIONAL PRECAUTIONARY STATEMENTS

Because of the unique mode of action of A.L.L.[™], successful use requires familiarity with special techniques recommended for application timing and treatment evaluation. See Guide to Product Application or consult local Mosquito Abatement Agency.

PRECAUTIONARY STATEMENTS

HAZARDS TO HUMANS CAUTION

Causes moderate eye irritation. Avoid contact with eyes or clothing. Wash thoroughly with soap and water after handling. Prolonged or frequently repeated skin contact may cause allergic reactions in some individuals.

ENVIRONMENTAL HAZARDS

This product is toxic to aquatic dipteran. Using it in a manner other than that describe⁸ by the label could result in harm to aquatic dipteran. Do not contaminate water when disposing of rinsate or equipment washwaters.

DIRECTIONS FOR USE

It is a violation of Federal Law to use this product in a manner inconsistent with its labeling.

CHEMIGATION

Refer to supplemental labeling entitled "Guide to Product Application" for use directions for chemigation. Do not apply this product through any irrigation system unless the supplemental labeling on chemigation is followed.

MIXING AND HANDLING INSTRUCTIONS

- 1 SHAKE WELL BEFORE USING. **A.L.L.** may separate on standing and must be thoroughly agitated prior to dilution.
- 2 Do not mix with oil; use clean equipment.
- 3 Partially fill spray tank with water; then add the recommended amount of A.L.L., agitate and complete filling. Mild agitation during application is desirable.
- 4 Spray solution should be used within 48 hours; always agitate before spraying.

RECOMMENDED APPLICATIONS

INTRODUCTION

A.L.L. must be applied to 2nd, 3rd, or 4th larval instars of floodwater mosquitoes to prevent adult emergence. Treated larvae continue normal development to the pupal stage where they die. This insect growth regulator **has no effect when applied to pupae or adult mosquitoes**. A.L.L. has sufficient field life to be effective at recommended rates when applied to larval stages under varying field conditions. For further information, see **Guide to Product Application**.

METHODS OF APPLICATION

AERIAL

Use the recommended amount of A.L.L. listed below in sufficient water to give complete coverage. One-half to 5 gallons of spray solution per acre is usually satisfactory. Do not apply when weather conditions favor drift from areas treated.

GROUND

Determine the average spray volume used per acre by individual operators and/or specific equipment. Mix A.L.L. in the appropriate volume of water to give the rate per acre recommended below.

APPLICATION RATE

Apply $\frac{3}{4}$ to 1 fl oz of A.L.L. per acre (55 to 73 ml/hectare) in water as directed.

APPLICATION SITES

PASTURES

A.L.L. may be applied after each flooding without removal of grazing livestock.

RICE

A.L.L. must be applied to 2nd, 3rd, and/or 4th instar larvae of mosquitoes found in rice, usually within 4 days after flooding. A.L.L. treatment may be repeated with each flooding.

INTERMITTENTLY FLOODED **NONCROP** AREAS

A.L.L. may be applied as directed above when flooding may result in floodwater mosquito hatch. Typical sites include: freshwater swamps and marshes, salt marshes, woodland pools and meadows, dredging spoil sites, drainage areas, waste treatment and settling ponds, ditches and other natural and manmade depressions.

CROP AREAS

A.L.L. may be applied to irrigated croplands after flooding to control mosquito emergence. Examples of such sites are: vineyards, rice fields (including wild rice), date palm orchards, fruit and nut orchards, and berry fields and bogs. Irrigated pastures may be treated after each flooding **without** the removal of livestock.

DENSE VEGETATION OR CANOPY AREAS

Apply an A.L.L. sand mixture using standard granular dispersal equipment. For detailed preparation instructions, refer to Guide to Product Application.

STORAGE AND DISPOSAL

Do not contaminate water, food, or feed by storage or disposal.

STORAGE

Store in cool place away from other pesticides, food, and feed. In case of leakage or spill, soak up with sand or another absorbent material

PESTICIDE DISPOSAL

Wastes resulting from the use of this product may be disposed of on site or at an approved waste disposal facility.

CONTAINER DISPOSAL

Triple rinse or equivalent. Then offer for recycling or reconditioning or puncture and dispose of in a sanitary landfill, or incineration, or if allowed by state and local authorities, by burning. If burned, stay out of smoke.

Seller makes no warranty, express or implied, concerning the use of this product other than indicated on the label. Buyer assumes all risk of use and handling of this material when such use and handling are contrary to label instructions.

For information call 1-800-248-7763

Always read the label before using the product



Wellmark International
Bensenville, Illinois U.S.A.

A.L.L.[™], ALTOSID[®] Liquid Larvicide Concentrate, and ZOECON[®] are trademarks of Wellmark International
01998 WELLMARK

January 1998
Bensenville, IL