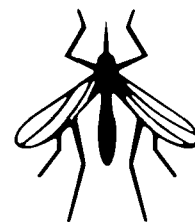


# Altosid<sup>®</sup> XR-G



## AN EXTENDED RESIDUAL GRANULAR PRODUCT TO PREVENT ADULT MOSQUITO EMERGENCE

# SPECIMEN LABEL

### ACTIVE INGREDIENT:

(S)-Methoprene (CAS #65733-16-6) . . . . . 1.5%

**OTHER INGREDIENTS:** . . . . . 98.5%

Total . . . . . 100.0%

EPA Reg No. 2724-451

KEEP OUT OF REACH OF CHILDREN  
**CAUTION**

### PRECAUTIONARY STATEMENTS

#### HAZARDS TO HUMANS AND DOMESTIC ANIMALS

#### CAUTION

Avoid contact with skin or eyes. Due to the size and abrasiveness of the granule, use protective eyewear and clothing to minimize exposure during loading and handling.

#### FIRST AID

In case of contact, immediately flush eyes or skin with plenty of water. Get medical attention if irritation persists.

#### ENVIRONMENTAL HAZARDS

This product is toxic to aquatic dipteran (mosquitoes) and chironomid (midges). Using it in a manner other than that described by the label could result in harm to aquatic dipteran (mosquitoes) and chironomid (midges). Do not contaminate water when disposing of rinsate or equipment washwaters.

### DIRECTIONS FOR USE

It is a violation of Federal Law to use this product in a manner inconsistent with its labeling.

### GENERAL DIRECTIONS

ALTOSID<sup>®</sup> XR-G releases effective levels of ALTOSID<sup>®</sup> insect growth regulator for up to 21 days after application. Applications should be continued throughout the entire season to maintain adequate control. Treated larvae continue to develop normally to the pupal stage where they die.

Rotary and fixed-wing aircraft equipped with granular spreaders capable of applying rates listed below may be used to apply ALTOSID XR-G. Ground equipment which will achieve even coverage at these rates may also be used. Apply ALTOSID XR-G uniformly and repeat application as necessary.

### NOTE

ALTOSID insect growth regulator has no effect on mosquitoes which have reached the pupal or adult stage prior to treatment.

### APPLICATION TIME

Apply ALTOSID XR-G at any stage of larval mosquito development. Granules may be applied prior to flooding (i.e., "pre-hatch" or "pre-flood") in areas which flood intermittently. In such areas, one application of ALTOSID XR-G can prevent adult mosquito emergence from several subsequent floodings. The actual length of control depends on the duration and frequency of flooding events.

## APPLICATION RATES

*Aedes*, *Anopheles*, and *Psorophora* spp.: Apply ALTOSID XR-G at 5-10 lb/acre (5.6-11.2 kg/ha). *Culex*, *Culiseta*, *Coquillettidia*, and *Mansonia* spp.: Apply ALTOSID XR-G at 10-20 lb/acre (11.2-22.4 kg/ha). Within these ranges, use lower rates when water is shallow [ $<2$  feet (60 cm)] and vegetation and/or pollution are minimal. Use higher rates when water is deep [ $\geq 2$  feet (60 cm)] and vegetation and/or pollution are heavy.

## APPLICATION SITES

### NON-CROP AREAS

ALTOSID XR-G may be applied as directed above to temporary and permanent sites which support mosquito larval development. Examples of such sites include: snow pools, salt and tidal marshes, freshwater swamps and marshes (cattail, red cedar, white maple marshes), woodland pools and meadows, dredging spoil sites, drainage areas, ditches, wastewater treatment facilities, livestock runoff lagoons, retention ponds, harvested timber stacks, swales, storm water drainage areas, sewers, catch basins, tree holes, water-holding receptacles (e.g., tires, urns, flower pots, cans, and other containers), and other natural and manmade depressions.

### CROP AREAS

ALTOSID XR-G may be applied as directed above to temporary and permanent sites which support mosquito larval development. Examples of such sites include: irrigated croplands, pastures, rangeland, vineyards, rice fields (domestic and wild), date palm, citrus, fruit, nut orchards, berry fields and bogs.

### NOTE

Application of ALTOSID XR-G to sites subject to water flow or exchange will diminish the product's effectiveness and may require higher application rates and/or more frequent applications.

## STORAGE AND DISPOSAL

Do not contaminate water, food, or feed by storage or disposal.

### STORAGE

Store closed containers of ALTOSID XR-G in a cool dry place.

### PESTICIDE DISPOSAL

Wastes resulting from the use of this product may be disposed of on site or at an approved waste disposal facility.

### CONTAINER DISPOSAL

Completely empty bag into application equipment. Then dispose of empty bag in a sanitary landfill or by incineration, or if allowed by state and local authorities, by burning. If burned, stay out of smoke.

## WARRANTY AND CONDITIONS OF SALE

Seller makes no warranty, express or implied, concerning the use and handling of this product other than indicated on the label. Buyer assumes all risks of use and handling of this material when such use and handling are contrary to label instructions.

Always read the label before using this product.

For information call 1-800-248-7763 or visit our web site: [www.altosid.com](http://www.altosid.com).

**Wellmark**  


Wellmark International  
Schaumburg, Illinois U.S.A.

Zoecon A Wellmark International Brand.  
ALTOSID® Insect Growth Regulator, ALTOSID® XR-G and ZÖECON® are registered trademarks of Wellmark International.

**ZÖECON**  
Professional  
Products  
